

Concrete Pit Installation Guide & Photos – manual/powered/solar

Swim Area	(kit size)	Lid Size
2.5m to 3.0m	Small	2.9m to 3.6m
3.1m to 3.6m	Medium	3.7m to 4.2m
3.7m to 4.2m	Large	4.3m to 4.8m
4.3m to 4.8m	Super *	4.9m to 5.4m
Wider Pools	Custom made *	Custom made

* 2 lid frames

The kits are adjustable within the size range listed above and designed for installation by a contractor or home handyman. Super and Custom kits are made to order. Full details provided in the kit installation instructions.

The **Aussie UnderCover**® Kit includes:

- Aluminium lid frame with stainless steel hinges attached, flush mount handle and gas strut
- Roller tube, winder mechanism with extended winding handle and aluminium mounting brackets
- Optional: Pool cover, hall cord and cover attachment kit

Basic Concrete Installation:

- Create your pit with formed concrete or any other suitable construction method
- Complete tiling or paving around the pit
- Install winder gearbox and tube assembly
- Assemble the lid frame (if required) and install inside your concrete pit.
- Finish lid frame with timber, composite timber or tiles to suit your situation
- **Important** - Hinges are set to accommodate a **19mm decking board**. Please advise if your lid product does not match this so we can adjust the hinges to suit
- Attach handle(s) and strut(s)
- **NOTE:** Material to cover the lid frame is not supplied with the kit
- **NOTE:** if you are using tiles, Modwood or other composite decking to cover the lid frame you will require an additional strut kit.

The **Aussie UnderCover**® requires a space .600m wider than your pool swim area (generally .300m either side) by .390m by a depth of .500m plus allowance for suitable drainage.

The .300m past the waterline is required on the side the gearbox or battery unit will be installed and normally you would have .300m on the other end to balance the system to the pool, but you can reduce the off side to .100m if space is an issue.



Aussie UNDER COVER

Hidden below ground
pool cover system
1300 722 009

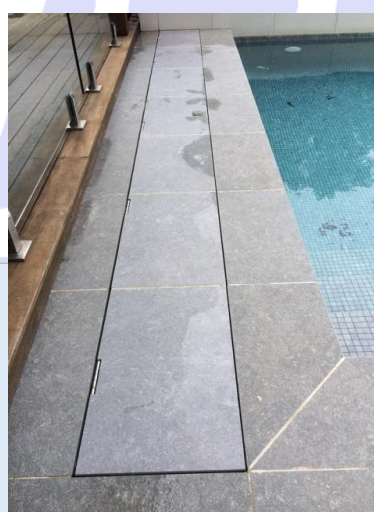
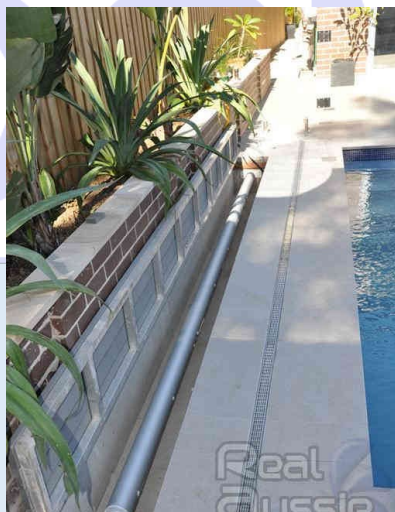


Form pit - allow suitable drainage – install finished surface (concrete, tiles or pavers)

Formal drain or gravel pit and agi line may be appropriate drainage



Install gearbox, end mount and tube assembly – measure, trim (if required) and install lid frame



Install chosen lid frame covering ie. decking, composite decking or tiles – install pool cover

**In all installation methods suitable drainage must be allowed to enable water to drain freely from the pit.
Drainage must be directed away from the pool.**