

Under Deck Installation Guide & Photos – manual/powered/solar

Swim Area	(kit size)	Lid Size
2.5m to 3.0m	Small	2.9m to 3.6m
3.1m to 3.6m	Medium	3.7m to 4.2m
3.7m to 4.2m	Large	4.3m to 4.8m
4.3m to 4.8m	Super *	4.9m to 5.4m
Wider Pools	Custom made *	Custom made

* 2 lid frames

The kits are adjustable within the size range listed above and designed for installation by a contractor or home handyman. Super and Custom kits are made to order. Full details provided in the kit installation instructions.

The **Aussie UnderCover®** Kit includes:

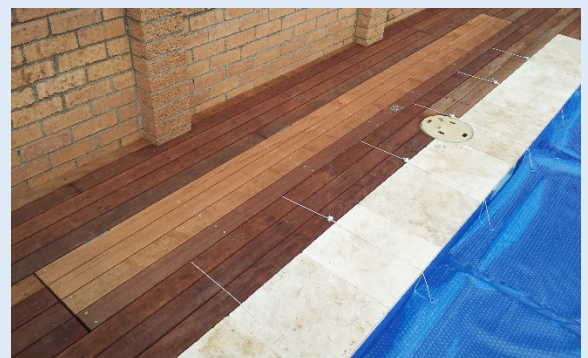
- Aluminium lid frame with stainless steel hinges attached, flush mount handle and gas strut
- Roller tube, winder mechanism with extended winding handle and aluminium mounting brackets
- Optional: Pool cover, hall cord and cover attachment kit

Basic Under Deck installation (ground clearance should be approx 500mm). For decks with clearance less than 500mm we recommend the in-ground kit.

- Insert additional posts and framing in your deck to accommodate the size of the assembled lid frame and provide a mounting surface for the lid and winder gearbox/tube assembly (instructions provided)
- Assemble the lid frame (if required) and attach inside your framed deck opening. Finish lid with timber to match your deck
- **Important** – Standard stainless-steel hinges are set to accommodate a **19mm decking board**. Please advise if your lid product does not match this so we can adjust the hinges accordingly.
- Attach handle(s) and strut(s)
- **NOTE:** Timber to frame the deck, cover the lid frame and timber treatment are not supplied with the kit.
- **NOTE:** if you are using Modwood or other composite decking to cover the lid you will require an additional strut kit.

The **Aussie UnderCover®** requires a space .600m wider than your pool swim area (generally .300m either side) by .390m by a depth of .500m plus allowance for suitable drainage.

The .300m past the waterline is required on the side the gearbox or battery unit will be installed and normally you would have .300m on the other end to balance the system to the pool, but you can reduce the off side to .100m if space is an issue.



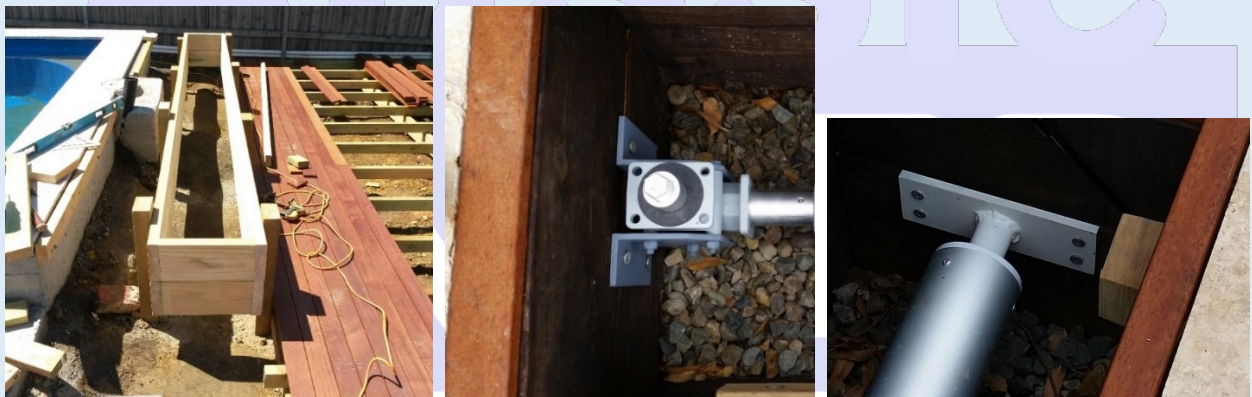
Aussie UNDER COVER

Hidden below ground
pool cover system
1300 722 009



Layout deck to accommodate the opening required for the kit – refer to plan provided with kit

Formal drain or gravel pit and agi line may be appropriate drainage



Install framing to create the deck opening required for the kit – mount gearbox, end mount and tube assembly



Measure and trim the lid frame (if required)



Install the lid frame - apply lid frame cover material (ie decking boards) - install the pool cover